



A complete solution for baggage reconciliation



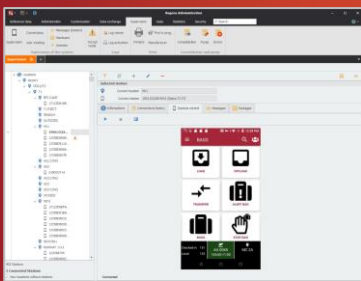
Enhanced baggage tracking and reconciliation

Baggage reconciliation and tracking are key elements in airport management in terms of security, rapidity and better service for airlines and airports.

BAGERA is a comprehensive reconciliation and tracking system. It provides reliable information about where a bag is located at all times, from check-in to loading, and whether it is matched with a boarded passenger or not.

Baggage information management

BAGERA retrieves baggage and passenger information from all airline DCS systems. It matches IATA bag messages with the flight information received from the Airport Operational Database (INFOPAX or any other system) and then tracks the bag all along the way from check-in, to bag belts, through to ULDs and the loading point. At all times, BAGERA can send bag messages back to the airlines (tracking and manifests). The system can also track bags of arrival flights.



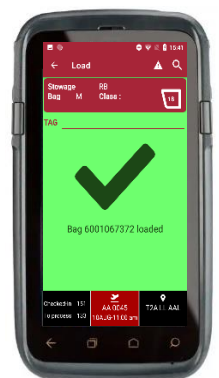
BAGERA improves baggage:

- ≡ Security
- ≡ Processing time
- ≡ Tracking and reconciliation

Easy to use and reliable

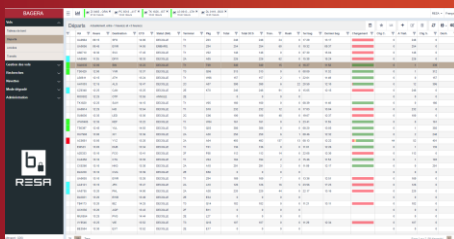
Mobile terminals

Communicating via WIFI/4G, the rugged mobile scanners allow baggage handlers to process loading and reconciliation operations in real time: assigning ULDs to flights, locating bags, loading or offloading ULDs and bags, etc. In addition, baggage handlers can create rush bags without receiving bag messages from airlines. They can also work in disconnected mode (for remote parking stands).



Workstations

The BAGERA Web application accessible from workstations (CREWS or standard airline workstations) enable supervisory staff (loadmasters, etc.) to assign ULDs to flights, monitor the bag loading progress, authorize rush bags, cancel bags, reprint a damaged bag tag and generally perform all baggage tracking and reconciliation operations. BAGERA client workstations can print bag manifests at any time.



A complete solution for baggage reconciliation

IATA Resolution PSCM - RESO753

This resolution is now mandatory for all airlines.

Each airport must be able to:

- ≡ Demonstrate delivery of baggage when custody changes
- ≡ Demonstrate receipt of baggage when custody changes
- ≡ Provide a baggage inventory upon departure of a flight
- ≡ Be capable of communicating these events with other airlines as needed

Please feel free to contact us for detailed documentation about BAGERA

V1.1

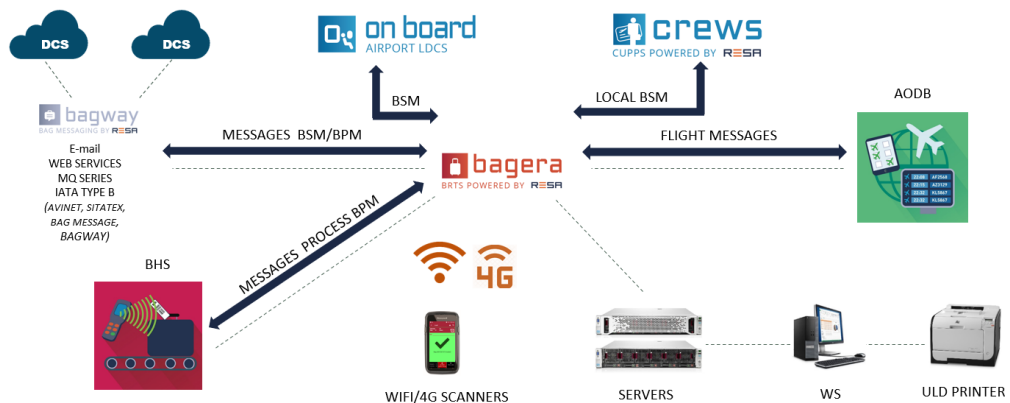
Functional architecture

BAGERA consists of various modules:

- ≡ An interfacing and message reception module, consisting of applicative connectors that receive baggage messages (BSM, BUM, etc.) from airlines as well as flight information from the AODB
- ≡ A relational database server that matches information from passenger and baggage data
- ≡ A web server that distributes information to client stations (PDAs, workstations).

BAGERA meets the specifications defined in the following recommendations:

- ≡ IATA PSCM - RP1745
- ≡ IATA PSCM - RP1800
- ≡ IATA PSCM - RESO753
- ≡ Annex OACI n° 17



Statistics and reports

BAGERA offers a varied list of pre-built reports as well as a tool that allows users to create their own reports:

- ≡ Export data from any list as a .pdf or .xls/x file
- ≡ Reports can be printed or automatically sent by email