

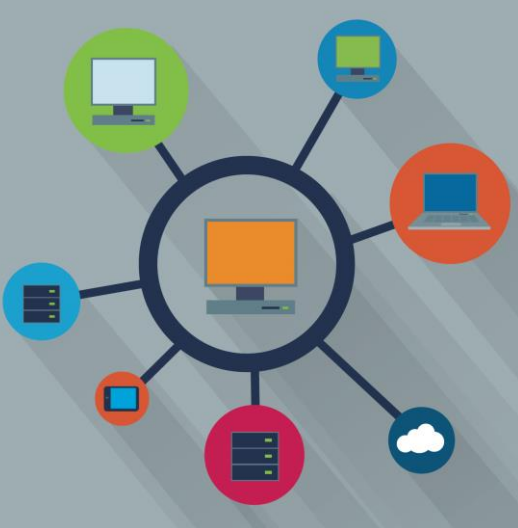


An information exchange system

FAIRWAY is a powerful business oriented EAI/ESB (Enterprise Application Integration/Enterprise Service Bus).

Acting as a manager of interfaces and message exchanges, FAIRWAY is the basis of middleware integration between the RESA systems and other applications, or between external systems operating on the platform.

It allows bidirectional data exchanges between various systems thanks to business connectors developed for automated and complex application processing.



A communication hub

FAIRWAY is an airport EAI (Airport Enterprise Application Integration) developed by RESA.

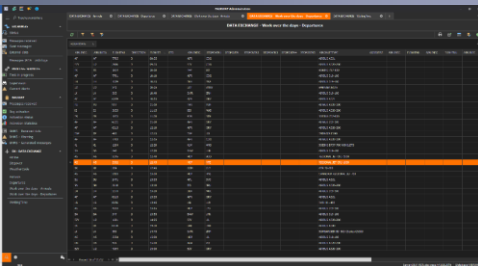
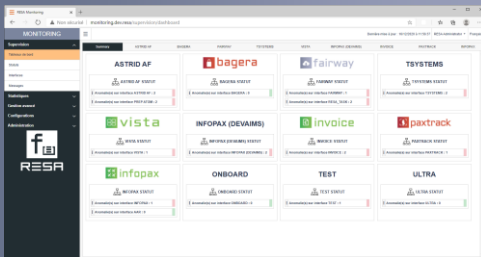
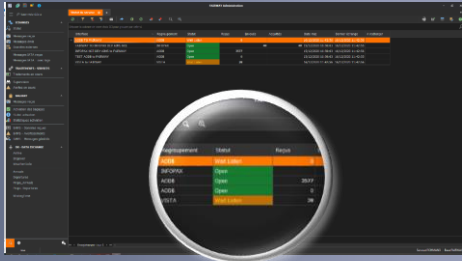
A complete communication server and message broker, FAIRWAY allows airports to:

- ≡ Freely develop their structure
- ≡ Integrate the latest technologies and applications of their choice
- ≡ Retain their communication system





Interfacing with different environments



FAIRWAY is composed of 3 main sub systems:

- ≡ FAIRWAY INTERFACE MANAGEMENT, CORE / FAIRGATE / ADMIN and TOOLS
- ≡ FAIRWAY MONITORING
- ≡ FAIRWAY DATA EXCHANGE (DX)

FAIRWAY INTERFACE MANAGEMENT - Message broker

FAIRWAY enables high-performance exchanges of information between mixed applications needing to connect to the airport IT platform, whatever the communication protocol used.

FAIRGATEs are the connectors/gateways that enable interconnections between the various systems and FAIRWAY CORE.

FAIRWAY CORE receives inbound messages and updates them as needed, performing validation and/or transformation processes, distribution, or any other custom process defined. The FAIRWAY administration tool allows the configuration of interfaces and messages exchanged, as well as their supervision. Simulation and test tools complete the interface management package.

FAIRWAY MONITORING - Control center module

FAIRWAY MONITORING is a module dedicated to the supervision of all systems (internal and external). This module is a key component of the airport's CCO (Operations Control Center) or more complex projects, such as the APOC (Airport Operations Center).

A summary dashboard allows the user to quickly identify any failure. Alerts are generated according to the supervision rules.

FAIRWAY DATA EXCHANGE (DX) - OPEN-DATA Module

The module FAIRWAY DX is designed to build an open database from the data processed by the interfaces (see FAIRWAY INTERFACE MANAGEMENT) and beyond (the data can be collected from any system).

FAIRWAY DX also provides secure data publication via Web APIs or specific protocols. The data exchanged can be in a specific format (Json, XML) or in compliance with the Open Air-IATA AIDM (Airline Industry Data Model), ACI ASM Semantic (XML messaging standard for flight information exchange - AIDX flight information).

Please feel free to contact us for detailed documentation about FAIRWAY.

V1.1