



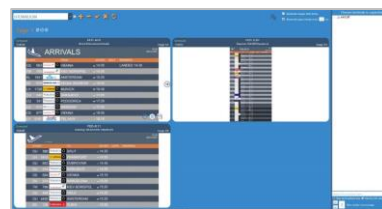
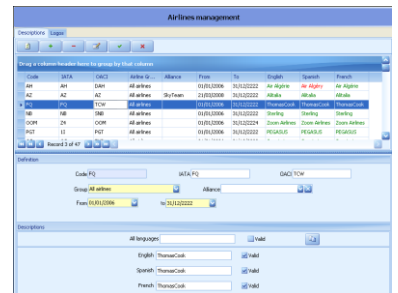
## Flight information display solution

The VISTA Flight Information Display System distributes information on display terminals connected to the airport network with a simple network access.

It receives flight information (flight numbers, resources allocated to the flights, airlines, schedules, etc.) from the Airport Operational Database or any other source (weather or traffic information system, passengers waiting time at security checkpoints, baggage delivery time, etc.).

### Administration and supervision features

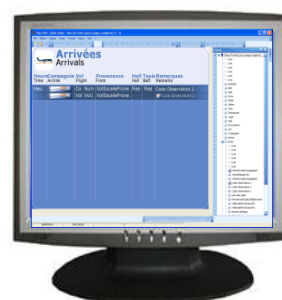
*VistaAdministration* is a module dedicated to the definition of general settings. It manages the display terminals, user rights, reference data (logos, texts, films, etc.), languages, messages and objects specific to the airport's needs.



The *VistaPanorama* module to monitor the entire set of screens, see the images displayed in real time on each of the screens, or get real-time feedback on the status of the screen.

### Image creation

Image creation is made easier thanks to a PowerPoint-type interface (drag & drop), with a variety of objects available (texts, logos, videos). Complex images can be created using several simple images from various sources (flight list + bus schedules + weather information).



VISTA Flight Information Display System offers:

- ≡ Numerous graphic capabilities
- ≡ Simplified administration
- ≡ Powerful supervision and user tools



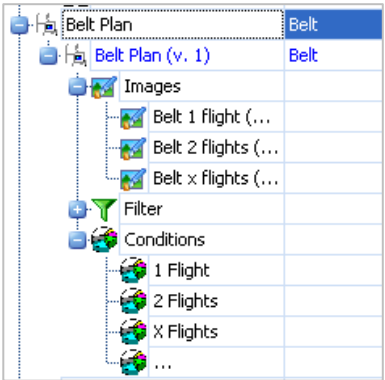
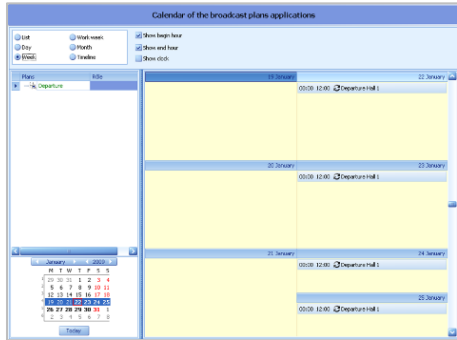


## Easy-to-use administration

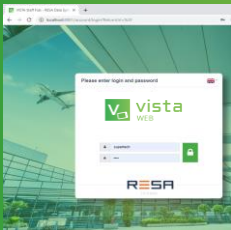
### Broadcasting

The administrator can manage the broadcasting of images created according to the broadcasting plans criteria: geographical areas (sets of screens), display terminal category (check-in, boarding, arrivals, etc.), broadcasting rules (number of flights assigned to a check-in desk), broadcasting periods (calendar view) and recurrence pattern.

Time	Airline	Flight	Destination	Temp	Check-in	Gate	Remarks
07:45	easyJet	AF 1237	PARIS-ORY	15°C	001-14	15	Gate closed
08:15	easyJet	EZJ 483	LYON	15°C	001-02	30	Boarding
08:35	easyJet	BA 877	LONDRES-HEA	6°C	C11	42	Boarding
08:45	easyJet	77 8322	METZ-RANNEY	6°C	037	12	Check-in open
09:10	easyJet	AF 5005	LILLE	10°C	001-07	22	Check-in open
09:45	easyJet	EZJ 533	LONDRES-GAT	6°C	001-04	43	Check-in open
10:05	easyJet	EZY 308	LONDRES	20°C	001-04		Cancelled
10:05	easyJet	IB 8775	MADRID	18°C	009-10	28	
10:15	easyJet	LH 1095	FRANCOFORT	7°C	C17-19	40	Check-in open
10:45	AIR FLYTA	DL 1362	FRANKFURT	18°C	001-09	25	Check-in open
11:05	easyJet	AF 5004	NICE	21°C	001-03	01	Delayed 11:30
11:05	easyJet	TU 283	TURIN	24°C	009-10	42	
11:05	easyJet	AZ 7847	MILAN	19°C	001-05	35	Please wait
12:10	easyJet	LH 1215	BOZAR	12°C	C17-19	33	



VISTA WEB is designed to display information to airport staff from any workstation equipped with a browser



The broadcast of images is then ensured by the integrated VISTA client application (embedded in the screen's graphic controller) which enables intelligent communication between display terminals and VISTA server via the TCP-IP network.

To avoid unnecessary traffic overloading the system during image transfer, VISTA sends image masks to the terminals before sending data to complete these images. Logos, videos and character fonts are automatically downloaded onto the terminals and are only refreshed when necessary.

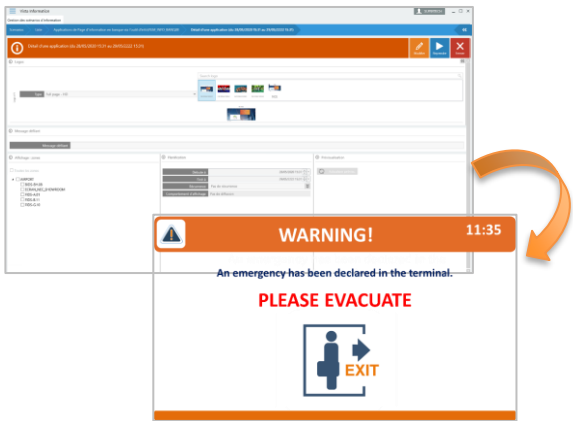
Real time	Arrivals	Screen update: 16:14:30 / DB update: 14:07:21
ARRIVALS	01 Flight	
DEPARTURES	22:00 EJU1666	easyJet TLV A320 M23 2
GATES	22:00 FRI1474	RYANAIR STN B737 AWP 1
FLIGHT	22:25 AF7712	easyJet CDG A321 AFR 2
RECALCULATED	22:25 KL1283	easyJet AMS B737 AFR 2
RECALCULATED	22:25 LH844	Lufthansa ZRH A320 AWP 1
RECALCULATED	22:35 EJU1666	easyJet AGA A320 M23 2

FIRST BAG LAST BAG enables baggage handlers to enter baggage delivery status for an arrival flight.

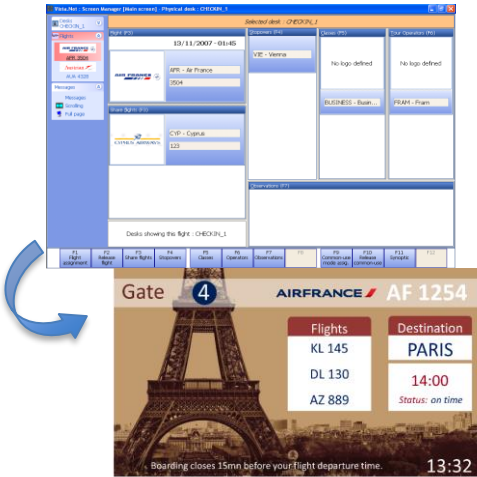


Please feel free to contact us for detailed documentation about VISTA.

V1.1



VISTA also provides an information tool enabling airport users to display information on predefined points (automatically or on demand), in alternation or in replacement of the broadcast plan applied. This is used for the broadcast of advertising, security, and crisis messages (weather conditions, strikes, etc.)



VISTA also integrates a tool enabling agents to allocate images to dedicated screens at check-in desks and boarding gates. Those agent tools are loaded from a dedicated workstation or from a CUTE/CUPPS (CREWS) workstation. Agents have access to numerous image configuration possibilities (multi-flight, broadcasting of specific scrolling messages, broadcasting of boarding sequences, etc.).